



Jabra®

# Jabra PRO™ 930



A BRAND BY

**GN Netcom**

© 2011 GN Netcom A/S. All rights reserved. Jabra® is a registered trademark of GN Netcom A/S. All other trademarks included herein are the property of their respective owners. (Design and specifications subject to change without notice).

MADE IN CHINA  
Type: WHB003



DESIGN REGISTRATION PENDING INTERNATIONAL

REGISTER YOUR JABRA AT [JABRA.COM/REGISTER](http://JABRA.COM/REGISTER) - FOR NEWS, SUPPORT AND COMPETITIONS

[www.jabra.com](http://www.jabra.com)

81-03324D

## Quick Start Guide

[www.jabra.com](http://www.jabra.com)

## CUSTOMER SUPPORT

### EUROPE

Belgique/Belgium	+ 49 (0)8031 2651 72
Czech Republic	+ 420 800 522 722
Danmark	Kontakt venligst din nærmeste forhandler (via følgende link) <a href="http://www.jabra.dk/forhandler">www.jabra.dk/forhandler</a>
Deutschland	+ 49 (0)8031 2651 72
España	+34 916 398 064
France	+ 33 (0) 130 589 075
Italia	+39 02 5832 8253
Luxembourg	+ 49 (0)8031 2651 72,
Nederland	+ 49 (0)8031 2651 72
Norge	+ 47 32 22 74 70
Österreich	+ 49 (0)8031 2651 72
Poland	0-801-800-550; + 48 12 254-40-15
Russia	techsupport.ru@jabra.com
Suomi	+ 358 204 85 6040
Sverige	+ 46 (0)8 693 09 00
United Kingdom	+ 44 (0)1784 220 172

### ASIA

Australia	1-800-636-086 (local distributor)
China	+ 86-21-5836 5067
Hong Kong	800-968-265 (Toll free)
India	000-800-852-1185 (Toll free)
Indonesia	001-803-852-7664
Japan	+ 81-3-5297-7976
Malaysia	1800-812-160 (Toll free)
New Zealand	0800-447-982 (Toll free)
Philippines	1800-765-7022 (ETPI) 1800-1855-0144 (PLDT)
Singapore	800-8523-794 -(Toll free)
Taiwan	0080-186-3013 (Toll free)
Thailand	001-8008523-794 (Toll free)

For more languages please refer to the manuals on the CD.

### MIDDLE EAST/AFRICA

**E-mail Support:** support.mea@gn.com

### USA & CANADA

Canada	1-800-489-4199
USA	1-800-826-4656

GN Netcom A/S  
Lautrupbjerg 7  
DK-2750 Ballerup  
Denmark

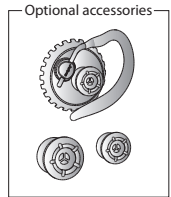
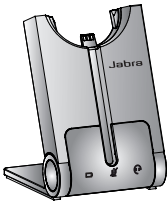
### WEB

[www.jabra.com](http://www.jabra.com) (for the latest support information and online User Manuals).

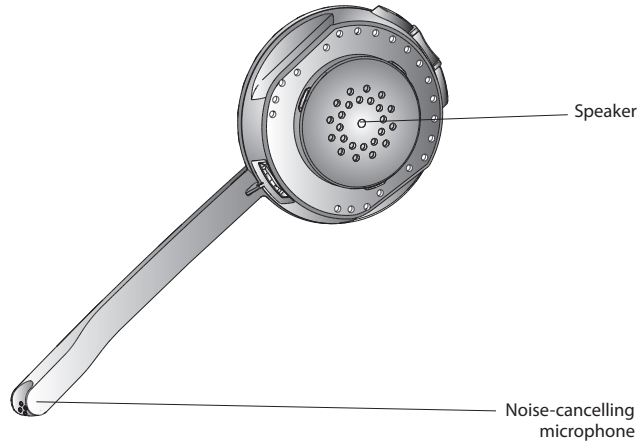
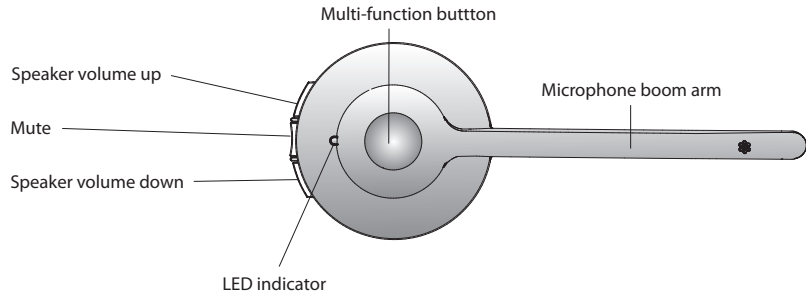
## LANGUAGES

ENGLISH / US	2
FRANÇAIS / FR	8
DEUTSCH / DE	14
ESPAÑOL / ES	20
繁體中文 / CHT	26

## PACKAGE CONTENTS

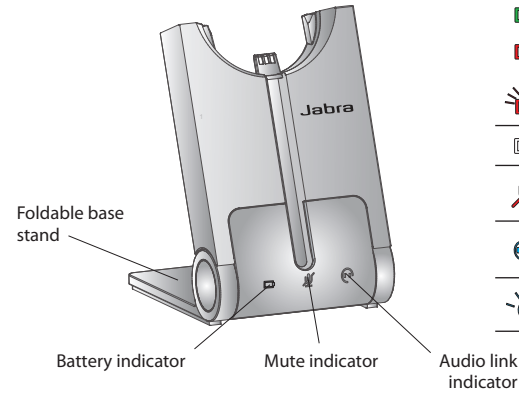


## JABRA PRO 930 HEADSET

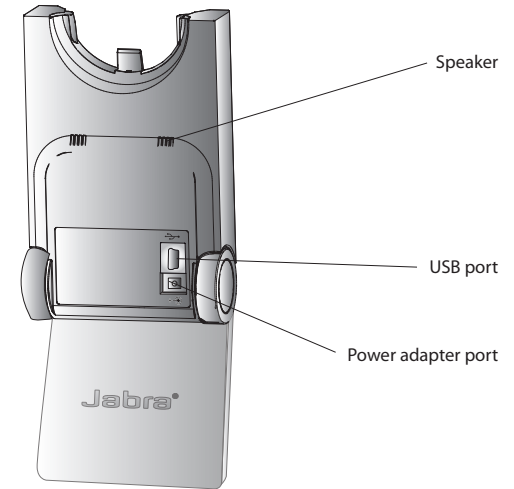


2

## JABRA PRO 930 BASE



Icon	Event
	Battery charging (slow flash)
	Full battery
	Low battery
	Very low battery (fast flash)
	Unknown battery status
	Microphone muted
	Active audio link between headset and base
	Searching for headset



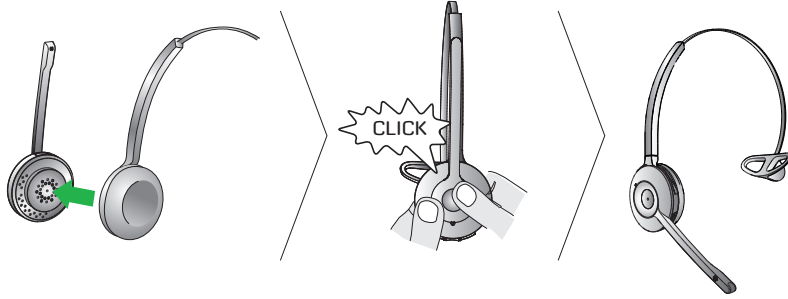
3



## SETUP

### STEP 1: ATTACH THE HEADBAND

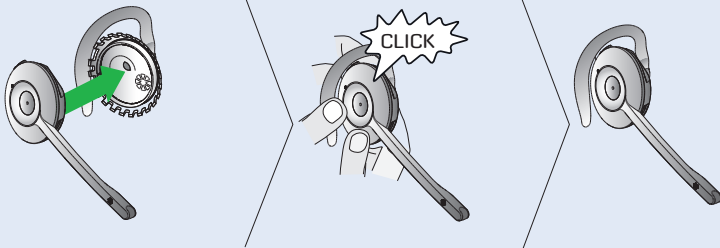
1. Align the headset and the headband wearing-style attachment, as illustrated, and press firmly together until they click into place (snap-to-click).
2. Rotate the microphone boom arm for left or right ear use.
3. Adjust the length of the headband to fit snug against the head.



### OPTIONAL ACCESSORIES

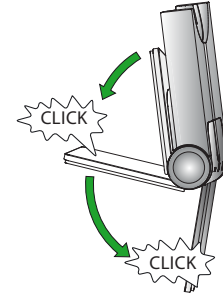
#### Attaching the earhook (not supplied in all regions)

1. Assemble the earhook wearing-style attachment for left or right ear use. If necessary, remove the earbud and replace with another size for best fit.
2. Align the headset and the earhook wearing-style attachment, as illustrated, and press firmly together until they click into place (snap-to-click).
3. Shape the earhook to fit snug around the ear.




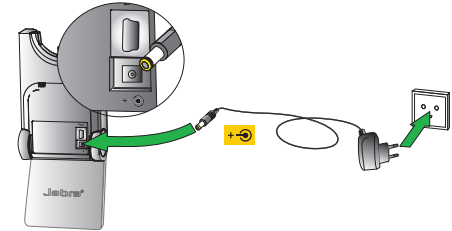
### STEP 2: UNFOLD THE BASE

The Jabra PRO base stand can be folded into three positions: open, closed, and standing position.




### STEP 3: CONNECT TO POWER

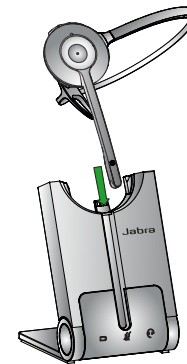
1. Plug the supplied power adapter into the port marked  on the base.
2. Connect the power adapter to the mains power socket.




### STEP 4: DOCK THE HEADSET

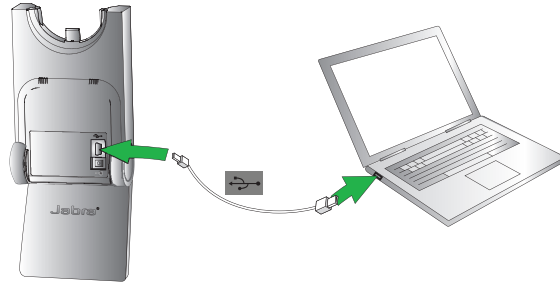
Dock the headset. When docked correctly the headset battery will begin charging, if needed.

Charge for 20 minutes or until the battery indicator on the base  is steady green. **Keep the headset docked during setup.**



### Step 5: Connect to PC

1. Plug the supplied USB cable into the port marked  on the base.
2. Connect the USB cable to any free USB slot on the PC.
3. Install Jabra PC Suite software from the supplied CD.

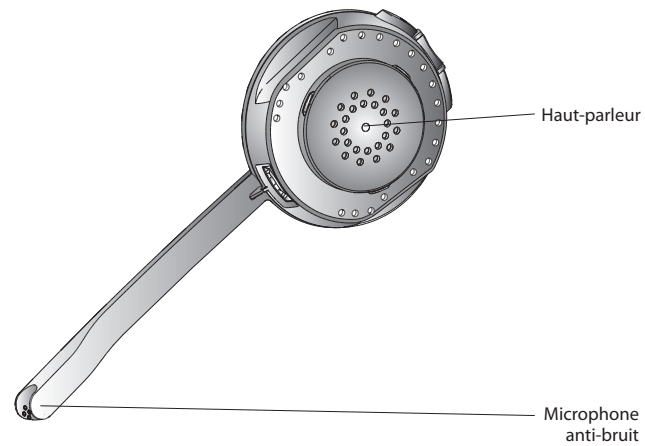
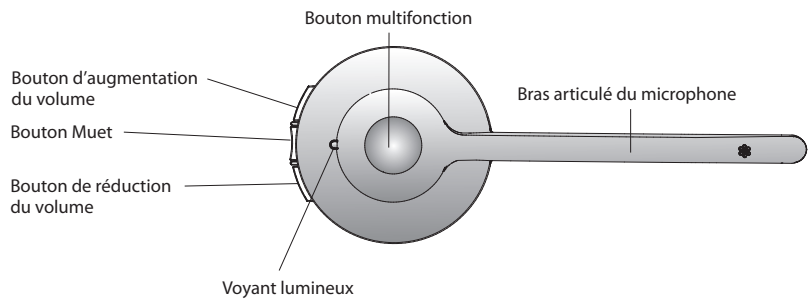


### IMPORTANT

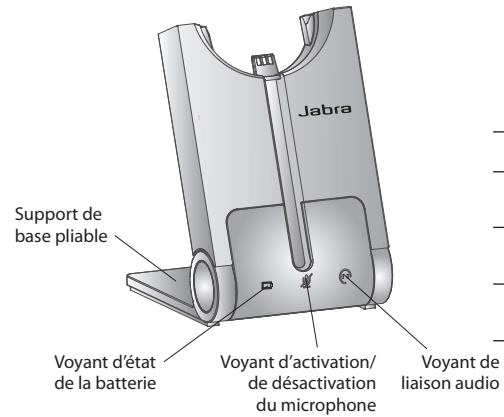
Set the Jabra PRO 930 as speaker and microphone in the softphone audio settings.

**YOU HAVE NOW SUCCESSFULLY CONNECTED YOUR JABRA PRO 930**

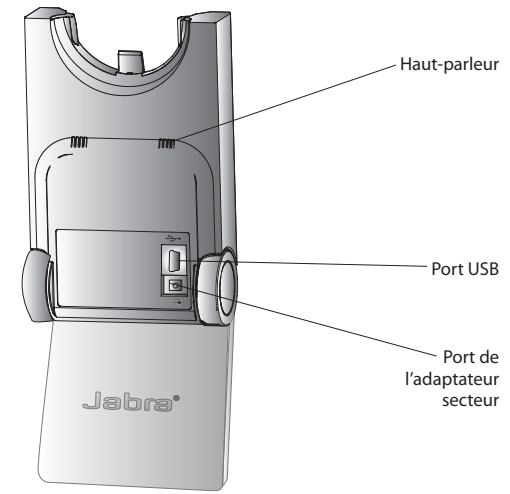
## MICRO-CASQUE JABRA PRO 930



## BASE DU JABRA PRO 930



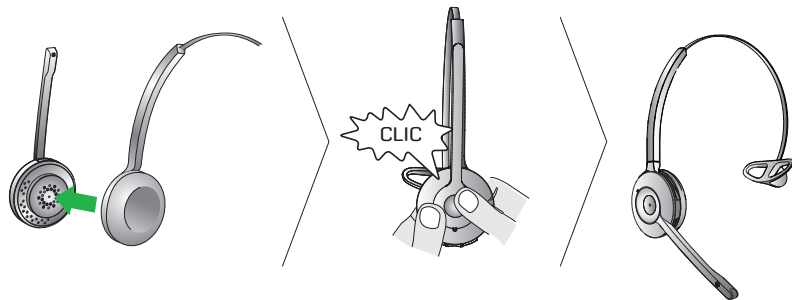
Icone	Événement
	Batterie en charge (clignotement lent)
	Batterie chargée
	Batterie faible
	Batterie très faible (clignotement rapide)
	État de la batterie inconnu
	Microphone désactivé
	Liaison audio active entre le micro-casque et la base
	Recherche du micro-casque en cours



## CONFIGURATION

### ÉTAPE 1 : FIXATION DU SERRE-TÊTE

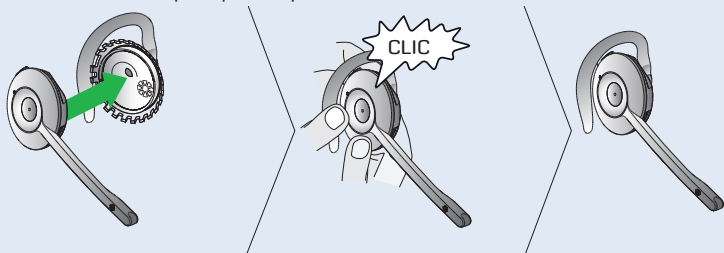
1. Alignez le micro-casque et la fixation de port d'oreillette du serre-tête, comme l'indique l'illustration, et pressez doucement sur les deux éléments jusqu'à ce qu'ils s'enclenchent correctement (vous entendez un clic).
2. Faites pivoter le bras articulé du microphone pour utiliser l'oreille gauche ou droite selon le besoin.
3. Réglez la longueur du serre-tête pour qu'il s'adapte à la tête.



### ACCESSOIRES EN OPTION

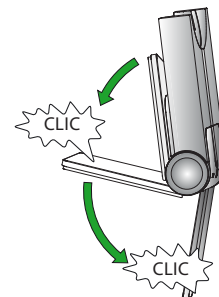
#### Fixation du contour d'oreille (le contour d'oreille n'est pas fourni dans toutes les régions)

1. Assemblez la fixation de port d'oreillette du contour d'oreille de manière à l'utiliser sur l'oreille gauche ou droite. Si nécessaire, retirez l'embout d'écouteur et remplacez-le par un embout d'une autre taille pour qu'il s'ajuste correctement.
2. Alignez le micro-casque et la fixation de port d'oreillette du contour d'oreille, comme l'indique l'illustration, et pressez doucement sur les deux éléments jusqu'à ce qu'ils s'enclenchent correctement (vous entendez un clic).
3. Ajustez le contour d'oreille pour qu'il s'adapte à l'oreille.




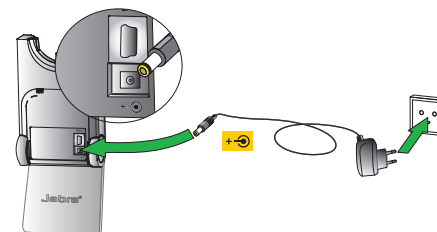
### ÉTAPE 2 : OUVERTURE DE LA BASE

Le support de la base Jabra PRO possède trois positions : ouverte, fermée et entrouverte.




### ÉTAPE 3 : RACCORDEMENT AU SECTEUR

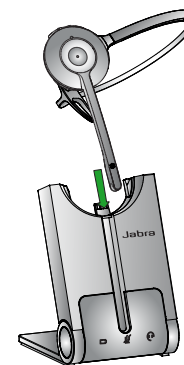
1. Branchez l'adaptateur secteur fourni sur le port  de la base.
2. Raccordez l'adaptateur secteur à la prise murale.




### ÉTAPE 4 : INSERTION DU MICRO-CASQUE DANS LE SUPPORT

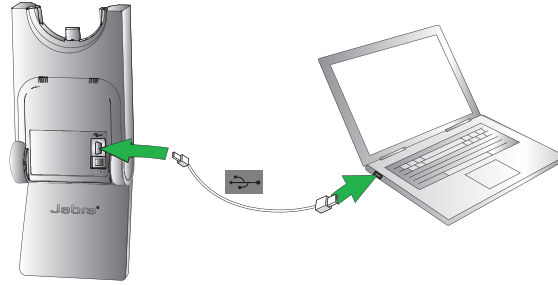
Insérez le micro-casque dans son support. Une fois le micro-casque correctement inséré, la batterie commence à se charger, si nécessaire.

Chargez pendant 20 minutes ou jusqu'à ce que le voyant d'état de la batterie de la base  soit vert fixe. **Laissez le micro-casque inséré dans le support pendant la configuration.**



### Étape 5 : Connexion à l'ordinateur

1. Branchez le câble USB fourni sur le port  de la base.
2. Connectez le câble USB à un port USB disponible de l'ordinateur.
3. Installez la suite Jabra PC Suite à partir du CD fourni.

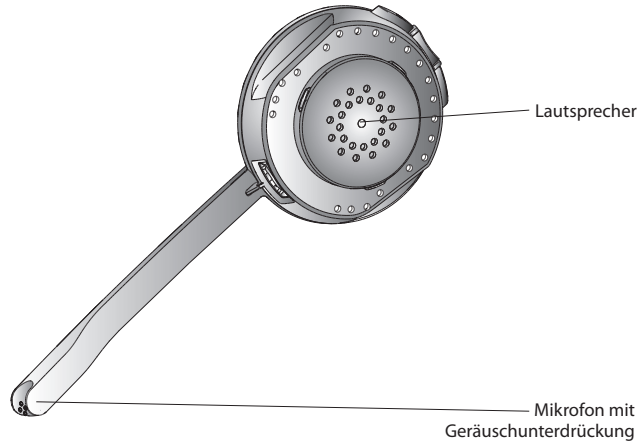
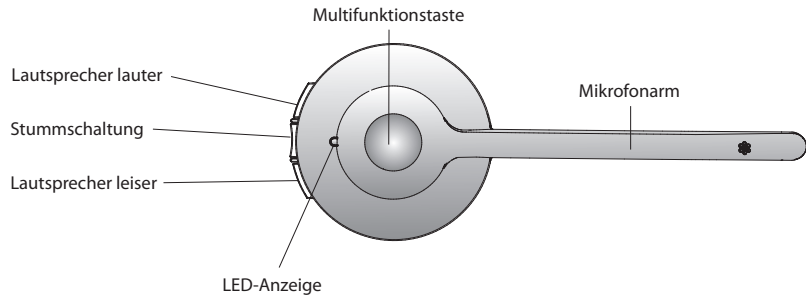


#### IMPORTANT

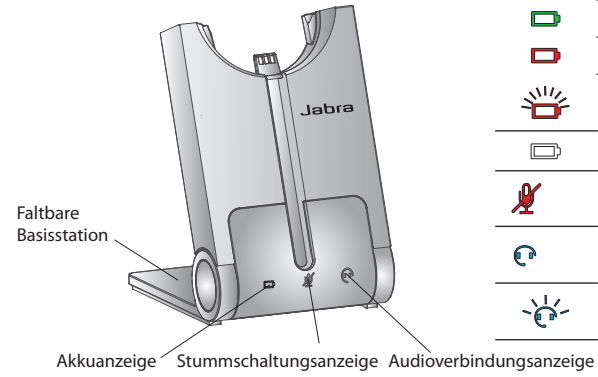
Définissez le Jabra PRO 930 en tant que haut-parleur et microphone dans les paramètres audio du logiciel de téléphonie.

**VOUS AVEZ MAINTENANT CORRECTEMENT CONNECTÉ VOTRE JABRA PRO 930.**

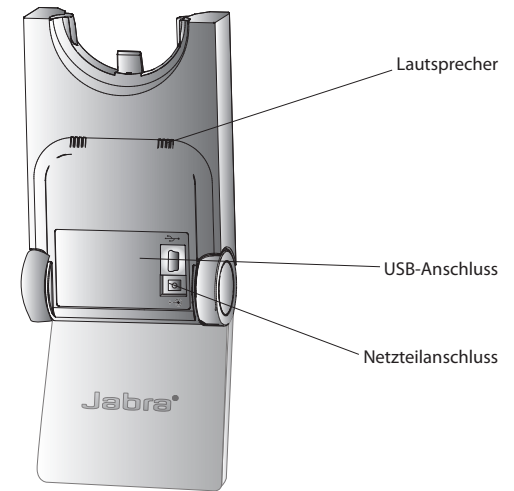
## JABRA PRO 930 HEADSETS



## JABRA PRO 930 BASISSTATION



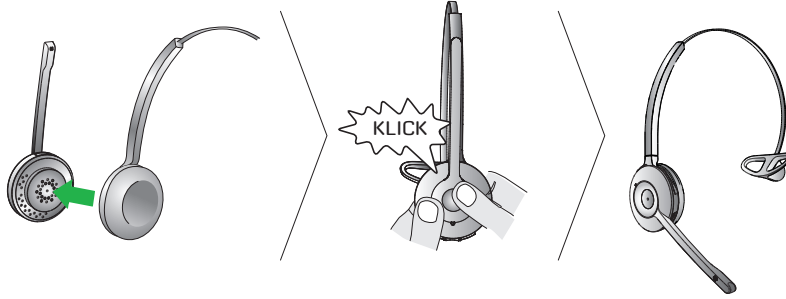
Symbol	Ereignis
	Akku wird geladen (blinkt langsam)
	Akku voll
	Akkuladestand niedrig
	Akkuladestand sehr niedrig (blinkt schnell)
	Akkuladestand unbekannt
	Mikrofon stummgeschaltet
	Audioverbindung zwischen Headset und Basisstation aktiv
	Suche nach Headset durchführen



## SETUP (EINRICHTUNG)

### SCHRITT 1: BEFESTIGEN DES ÜBERKOPFBÜGELS

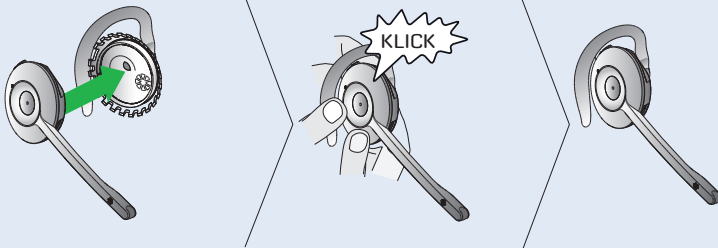
1. Richten Sie Headset und Überkopfbügel wie abgebildet aus und drücken Sie sie fest zusammen, bis sie mit einem Klicken einrasten.
2. Drehen Sie den Mikrofonarm wie zur Nutzung des Headsets am linken oder rechten Ohr erforderlich.
3. Passen Sie die Länge des Überkopfbügels an, so dass dieser bequem an Ihrem Kopf anliegt.



### OPTIONALES ZUBEHÖR

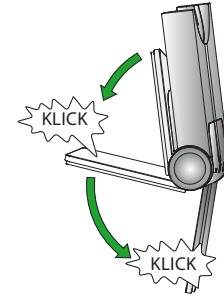
#### Ohrbügel befestigen (nicht in allen Regionen im Lieferumfang enthalten)

1. Montieren Sie den Ohrbügel wie zur Nutzung am linken oder rechten Ohr erforderlich. Bei Bedarf können Sie den Ohrstöpsel entfernen und durch eine andere Größe ersetzen.
2. Richten Sie Headset und Ohrbügel wie abgebildet aus und drücken Sie sie zusammen, bis sie mit einem Klicken einrasten.
3. Formen Sie den Ohrbügel so, dass er bequem an Ihrem Ohr sitzt.




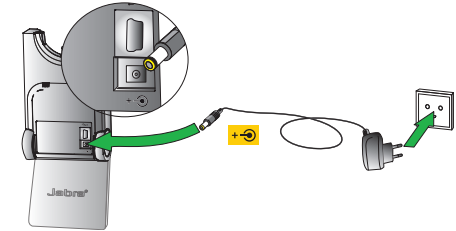
### SCHRITT 2: AUFKLAFFEN DER BASISSTATION

Die Jabra PRO-Basisstation kann in drei Positionen aufgeklappt sein, offen, geschlossen und stehend.




### SCHRITT 3: ANSCHLUSS AN DIE NETZSTROMVERSORUNG

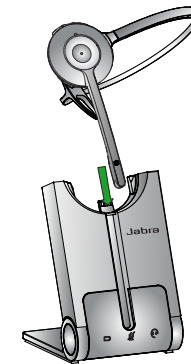
1. Stecken Sie das mitgelieferte Netzteil in den mit dem Symbol  markierten Stromversorgungsbuchse an der Basisstation.
2. Stecken Sie das Netzteil in eine Steckdose ein.




### SCHRITT 4: ANDOCKEN DES HEADSETS

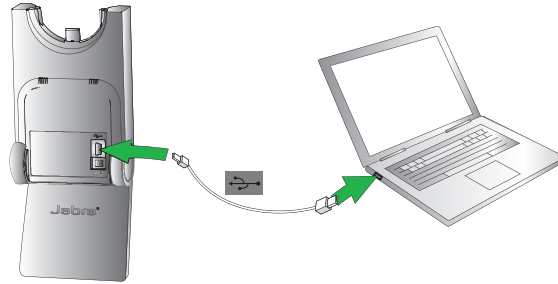
Legen Sie das Headset in den Ladeschacht ein. Ist das Headset korrekt andockt, wird der Akku aufgeladen, falls dies erforderlich ist.

Laden Sie das Headset 20 Minuten lang bzw., bis die Akkuanzeige  an der Basisstation grün leuchtet, auf. **Das Headset muss während der Konfiguration andockt bleiben.**



### Schritt 5: Anschließen an einen Computer

1. Stecken Sie das mitgelieferte USB-Kabel in den mit dem Symbol  markierten Anschluss an der Basisstation.
2. Verbinden Sie das USB-Kabel mit einem freien USB-Anschluss des Computers.
3. Installieren Sie die Jabra PC Suite von der mitgelieferten CD.



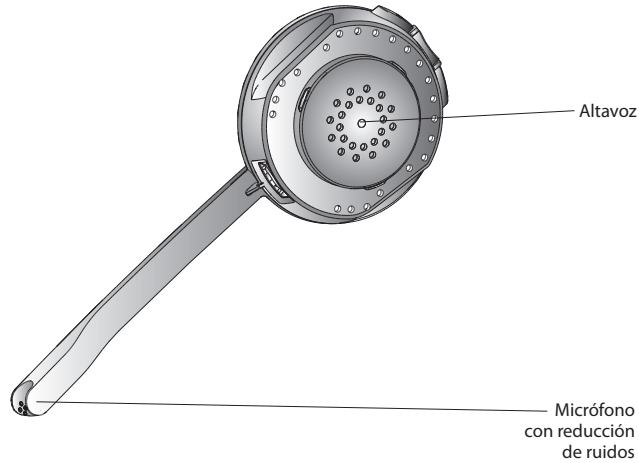
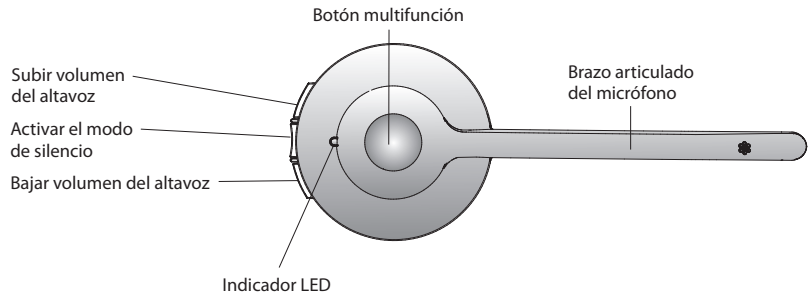
#### WICHTIG

Legen Sie in den Einstellungen der Softphone-Anwendung das Jabra PRO 930 als Lautsprecher und als Mikrofon fest.

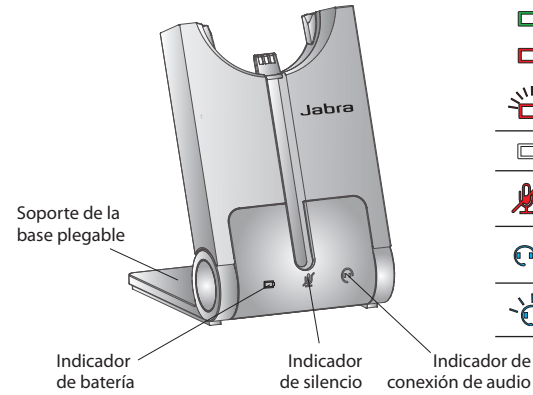
IHR JABRA PRO 930 IST JETZT ANGESCHLOSSEN.



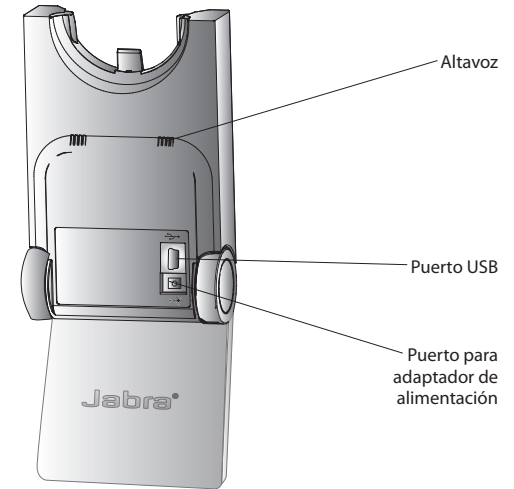
## AURICULAR JABRA PRO 930



## BASE JABRA PRO 930



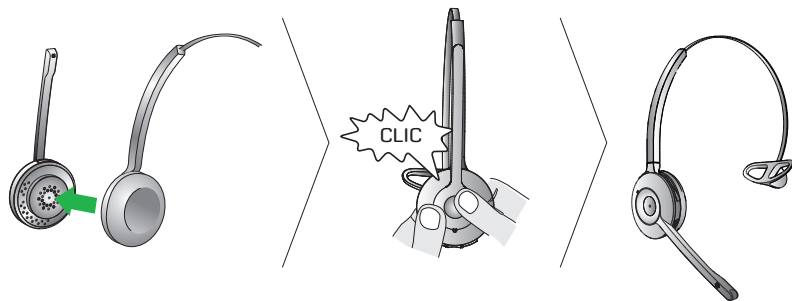
Icono	Evento
	Batería cargándose (parpadeo lento)
	Batería con carga completa
	Batería baja
	Batería muy baja (parpadeo rápido)
	Estado de batería desconocido
	Micrófono en silencio
	Conexión de audio activa entre el auricular y la base
	Búsqueda del auricular



## CONFIGURACIÓN

### PASO 1: COLOCACIÓN DEL AURICULAR

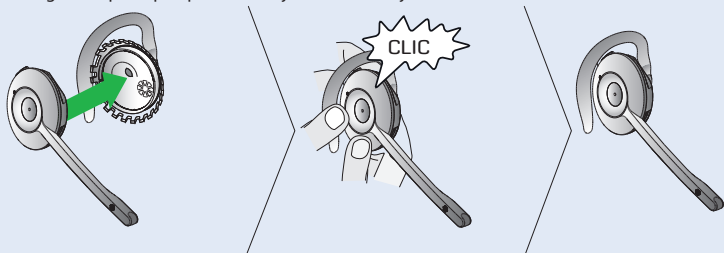
1. Alinee el auricular y la diadema para la cabeza, tal como se ve en la ilustración, y presione con fuerza hasta que encajen correctamente (oírás un clic).
2. Gire el brazo articulado del micrófono según sea necesario para usarlo en la oreja izquierda o derecha.
3. Ajuste la longitud de la diadema para que se adapte cómodamente a su cabeza.



### ACCESORIOS OPCIONALES

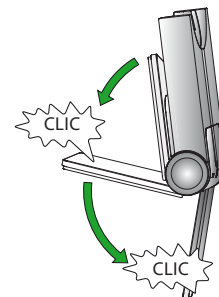
#### Colocación del gancho para la oreja (no se incluye en todas las regiones)

1. Monte el gancho para usarlo en la oreja derecha o en la izquierda. Si es necesario, saque el audífono y sustitúyalo por otro tamaño que se ajuste mejor.
2. Alinee el auricular y el gancho para la oreja, tal como se ve en la ilustración, y presione con fuerza hasta que encajen correctamente (oírás un clic).
3. Moldee el gancho para que quede bien ajustado a la oreja.




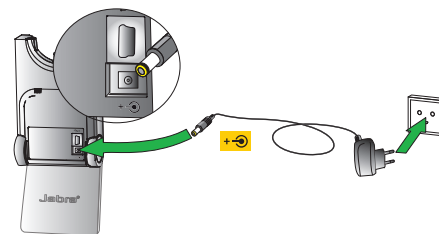
### PASO 2: DESPLIEGUE LA BASE

La base de Jabra PRO se puede plegar en tres posiciones: abierta, cerrada y de pie.




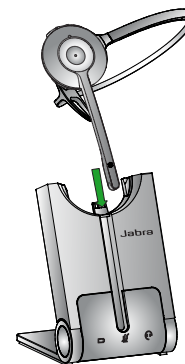
### PASO 3: CONEXIÓN A LA RED ELÉCTRICA

1. Enchufe el adaptador de alimentación suministrado al puerto de la base con la marca .
2. Conecte el adaptador de alimentación al enchufe de la red eléctrica.




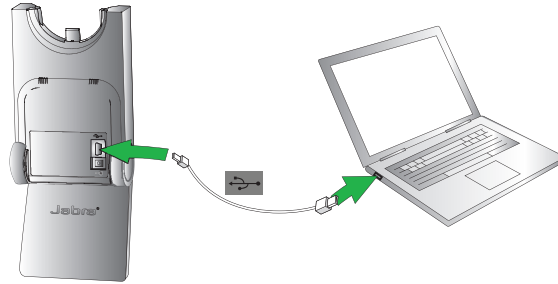
### PASO 4: ACOPLAMIENTO DEL AURICULAR EN LA BASE

Acople el auricular en la base. Cuando esté correctamente acoplado, la batería del auricular se empezará a cargar si es necesario. Cargue durante 20 minutos o hasta que el indicador de batería de la base  muestre una luz verde fija. **Mantenga el auricular en la base durante la configuración.**



### Paso 5: Conexión a un PC

1. Conecte el cable USB suministrado al puerto de la base con la marca 
2. Conecte el cable USB a cualquier puerto USB libre del PC.
3. Instale el software Jabra PC Suite con el CD suministrado.

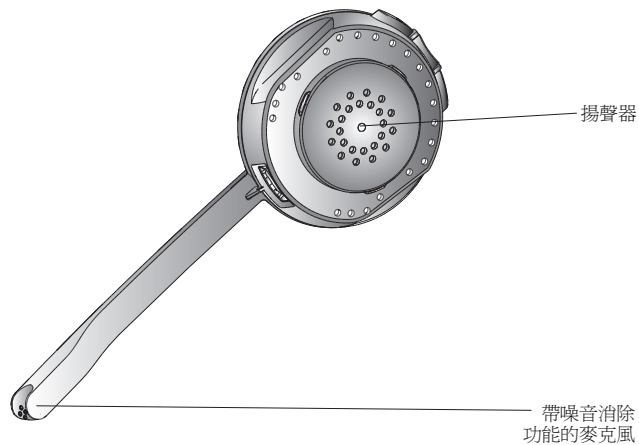
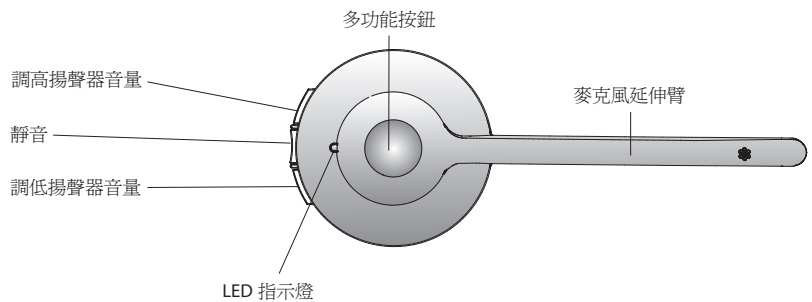


#### IMPORTANTE

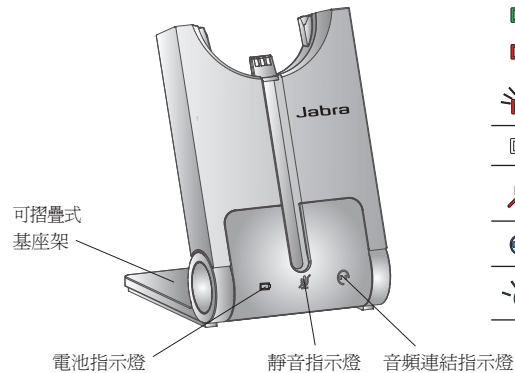
Configure el Jabra PRO 930 como altavoz y micrófono en la configuración de audio del softphone.

YA HA CONECTADO CON ÉXITO SU JABRA PRO 930

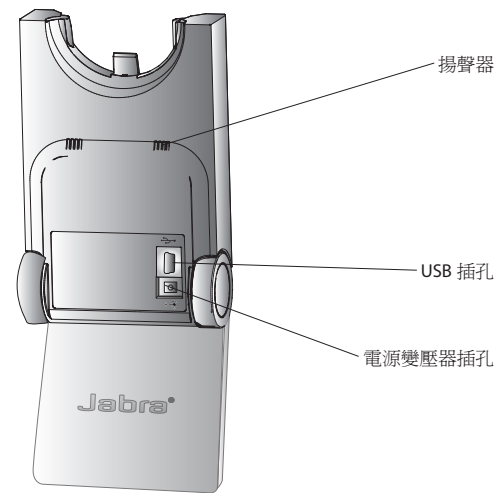
## JABRA PRO 930 耳機



## JABRA PRO 930 基座



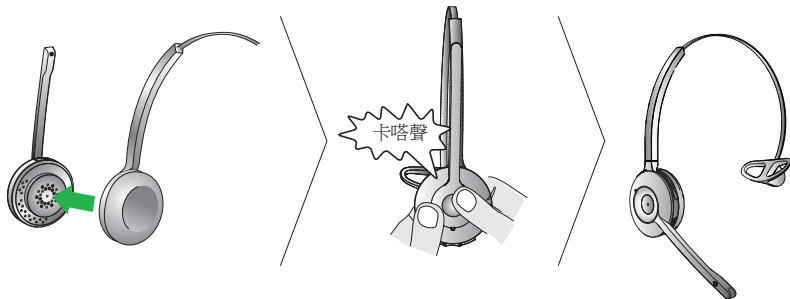
圖示	事件
	電池正在充電 (慢速閃爍)
	完全充電
	電力不足
	電量極低 (快速閃爍)
	不明的電池狀態
	麥克風已靜音
	耳機與基座之間存在音頻連結
	正在搜尋耳機



## 安裝

### 步驟 1：組合頭帶

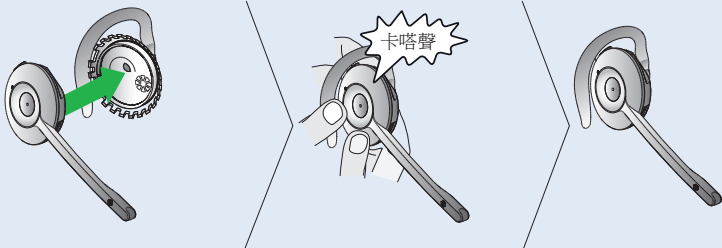
1. 對準耳機與頭帶附件（如圖所示），然後按緊直到附件卡緊入位（聽到卡嗒聲）。
2. 視乎需要，旋轉麥克風延伸臂以便用於左耳或右耳。
3. 調節頭帶的長度，使它緊貼環繞您的頭部。



### 可選配件

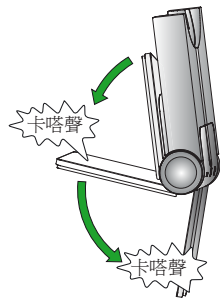
#### 組合耳勾（並非在所有地區提供）

1. 組合耳勾附件，供左耳或右耳使用。如有需要，可取下耳塞並以尺寸最合適的耳塞替換。
2. 對準耳機與耳勾附件（如圖所示），然後按緊直到附件卡緊入位（聽到卡嗒聲）。
3. 調整耳勾形狀，令其緊貼您的耳朵。



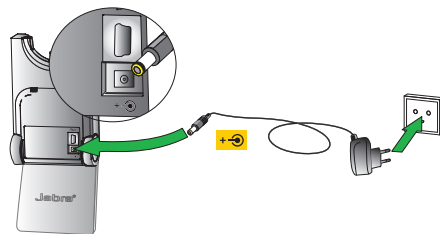
### 步驟 2：拉開基座

Jabra PRO 基座架有三種摺疊方式：  
敞開、閉合及直立位置。




### 步驟 3：連接至電源

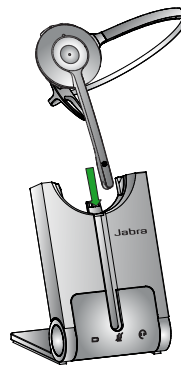
1. 將隨附的電源變壓器插入基座上標示為  的插孔。
2. 將電源變壓器連接到主電源插座。




### 步驟 4：把耳機放在基座上

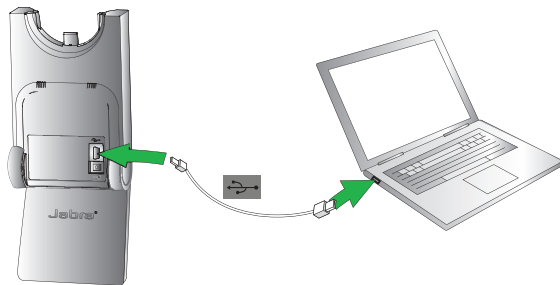
把耳機放在基座上。當耳機妥當放在基座上後，耳機電池將會開始進行充電（如有需要）。

充電 20 分鐘或是等至基座上的電池指示燈  一直亮綠燈。**設定期間，請保持耳機放在基座上。**



### 步驟 5：連接電腦

1. 將隨附的 USB 纜線插入底座上標示為  的插孔。
2. 連接 USB 纜線到電腦的任何可用 USB 插孔。
3. 使用隨附的 CD 安裝 Jabra PC Suite。



#### 重要事項

於軟體式電話的音頻設定中將 Jabra PRO 930 設定為揚聲器及麥克風。

**現在您即完成連接 JABRA PRO 930**