

# zBoost CI for Custom Installers: Install Overview



## STEP 1: CHECK UNIT FOR COMPATIBILITY

**YX610-PCS-CEL:** Step 1 is not necessary for this model - Works with all U.S. devices  
**YX600-PCS:** Works with 1900MHz devices  
**YX600-CEL:** Works with 800MHz devices

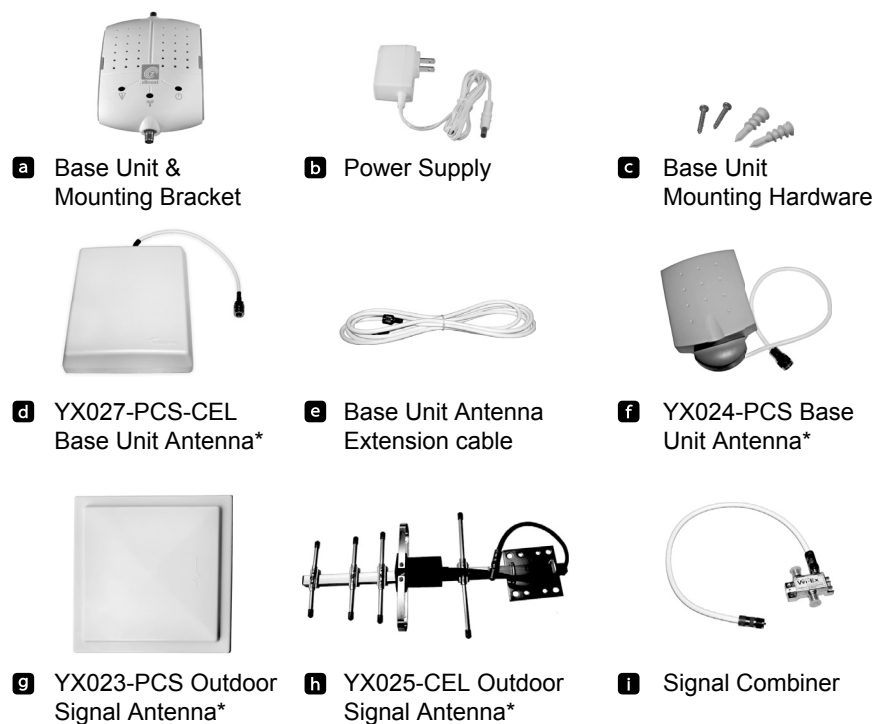
To verify that your phone will work in conjunction with the model purchased, please follow these four simple steps:

- 1) Unpack the Base Unit, Base Unit Antenna and power supply (Pictured below).
- 2) Connect the Base Unit Antenna and the power supply to Base Unit and plug it into an outlet. The green power light (🟢) should illuminate.
- 3) Bring the unit to an area where there is enough signal to place a call (using an extension cord may be necessary). If the Signal light (📶) begins flashing while placing a call, you may proceed to the next step. If it flashes red, move your phone further away from the Base Unit and retry.
- 4) If the Signal light (📶) does not flash green, try placing another call with your cell phone next to the Base Unit antenna. If the Signal light (📶) still does not flash green, your cell phone may be operating on a frequency supported by a different model. Some carriers, such as AT&T and Verizon change frequency depending on location.

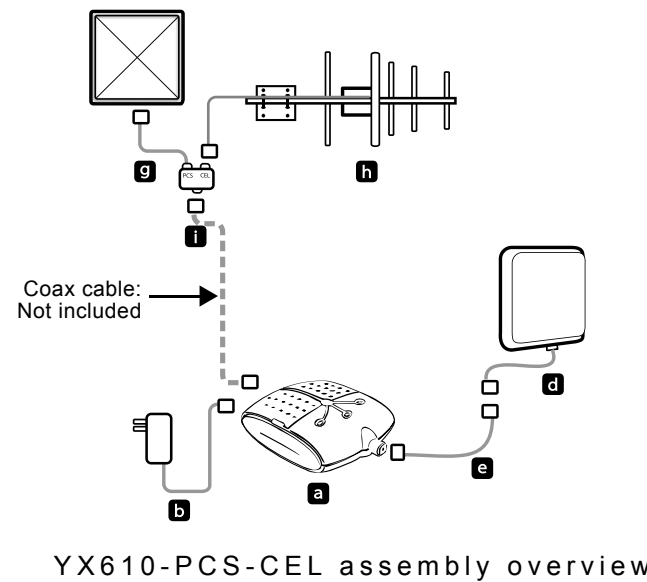
Go to [www.wirelessadvisor.com](http://www.wirelessadvisor.com), email Wi-Ex technical support at [support@Wi-Ex.com](mailto:support@Wi-Ex.com), or call 1-800-871-1612 for further assistance in identifying your frequency.

The following contents are included in your zBoost system:

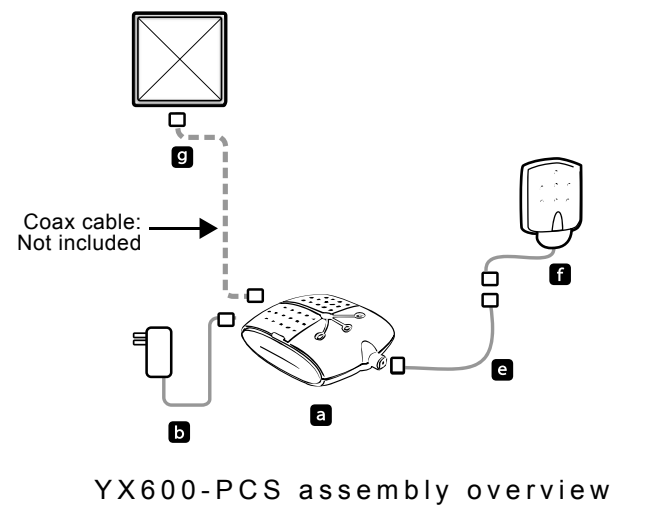
- YX610-PCS-CEL: a b c d e g h i
- YX600-PCS: a b c e f g
- YX600-CEL: a b c d e h



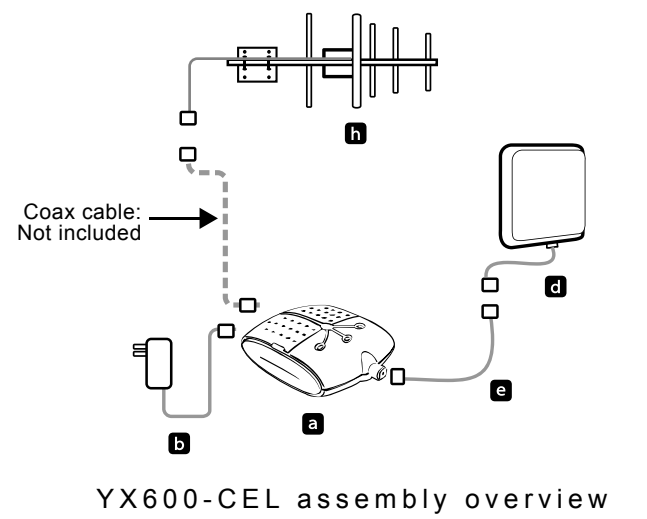
\*note 1: Includes mounting hardware



YX610-PCS-CEL assembly overview



YX600-PCS assembly overview



YX600-CEL assembly overview

## zBOOST INSTALLATION

zBoost CI is a signal boosting system designed for professional installation in large or challenging applications. The system includes high-gain directional antennas that require care in aiming and placing both the Signal Antenna(s) and interior components. Before you begin, it is helpful to know the location of the nearest cell tower(s) of the appropriate carrier networks.

### OVERVIEW:

**FIRST:** Find the area of best signal for placement of the Signal Antenna(s) generally found on the roof or in the attic. This can be determined by using the signal strength indicator on your mobile phone or by using a zBoost YX699 Signal Strength Meter available at Wi-Ex.com.

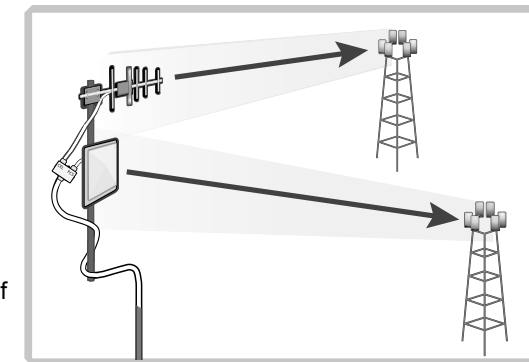
**SECOND:** All 3 models of the zBoost CI require that the Signal Antenna be aimed in the direction of best signal. Carefully consider that the Signal Antenna should be mounted at least 3 feet away from any metal. (YX610-PCS-CEL uses 2 signal antennas which may require them to point in different directions)

**THIRD:** Connect the coax cable (not provided) to the signal antenna(s). Run the cable from the signal antenna(s) to the area where signal is needed. If the application requires less than 50ft of cable, use RG-6 cable. If the application requires between 50 and 100 ft of cable, use RG-11 cable. More than 100 ft of cable is not recommended as the performance will be significantly impacted. (YX610-PCS-CEL model connects to a signal combiner before connecting to coax cable)

**FOURTH:** From inside, place the interior antenna such that it faces the area of needed signal. When choosing the proper location, ensure that there is adequate distance between the Base Unit Antenna and the Signal Antenna(s) - at least 15ft. Also, keep in mind that performance degrades as it passes through interior structures (ceilings, walls, etc). Connect the zBoost Base Unit and the Base Unit Antenna using the provided extension cable if necessary. The Base Unit may be placed where needed. (To mount the Base Unit to a wall, first remove the orange bracket from the Base Unit, mount the bracket in the desired location using provided hardware and snap the Base Unit and bracket back together.)

**FINALLY:** Connect the coax cable to the Base Unit and plug the Base Unit into an outlet using the provided power supply.

**IMPORTANT:** The coaxial cable needed for installation has not been provided. You will need RG-6 for 50ft of cable or RG-11 for up to 100 ft. In an ideal setting, zBoost CI will provide a maximum of 10,000 sq ft. Keep in mind that if your best signal is 1 bar, your indoor coverage coverage will be limited. Ensure that there is adequate distance between the Base Unit Antenna and the Signal Antenna(s) - at least 15ft. There should be a minimum of 3 feet between the Signal Antenna and any metal.



Model shown: zBoost YX610-PCS-CEL  
Note: Mounting pole not included

