

CONNECTING UNIT FOR UNI System 8



UNI Take&Talk
CRADLES FOR MORE THAN
250
MOBILE PHONES



UNI Take&Talk cradle* for mobile phones of leading network operators (T-Mobile, Vodafone, Orange, O²) and of renowned manufacturers of mobiles:

BenQSiemens
HP
HTC (MDA, SDA, SPV)
LG
Motorola
Nokia
Palm
RIM (BlackBerry)
Sagem
Samsung
Sharp
Sierra-Wireless
Sony Ericsson ...

UNI Take&Talk

- Active cradle with charging function for all UNI System 8 hands-free car kits
- High-quality reception through external antenna use
- When changing the mobile, no need to exchange the hands-free car kit completely
- Thief-proof: cradle together with mobile phone detachable

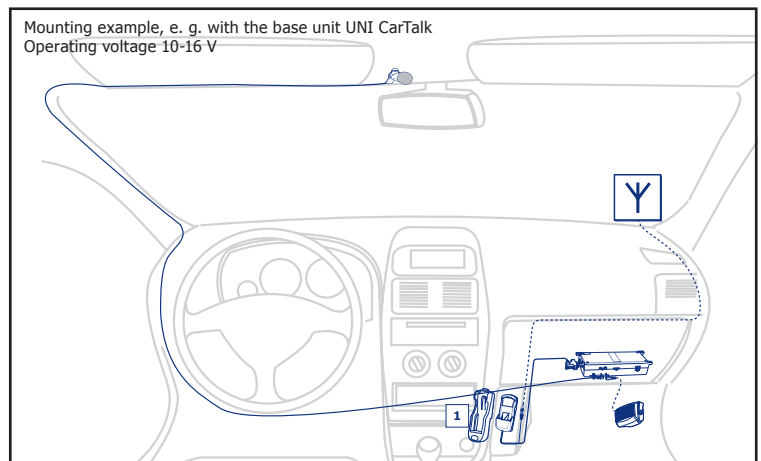
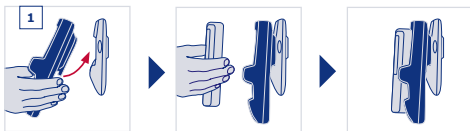
* For detailed information about available cradles (also with Bluetooth technology) go to www.bury.com, contact your local retailer or our hotline.

Subject to alterations and errors expected



UNI Take&Talk

The series of **UNI Take&Talk** cradles epitomizes the flexibility of the UNI System 8. When changing your mobile phone you keep your base unit and simply choose a connecting unit which suits your new mobile. Our extensive range of UNI Take&Talk cradles (several with Bluetooth function) enables the appliance of more than 250 mobile phones of leading manufacturers. The composed universal hands-free car kit depicts a felicitous combination of great flexibility and high voice quality.



UNI System 8



Base units:

UNI CarTalk UNI CarTalk BUSINESS UNI VoiceTalk DSP UNI TrendTalk



Connecting units:



Technical details	
External dimensions	According to model
Operating voltage	10 - 16 V
Quiescent current	max. 1 mA when U = 13,5 V
Working current	approx. 500 mA in standby modus / max. 1,5A in active call
Temperature range	-40 °C to +50 °C
Casing	casting
Accreditations	
UNI Take&Talk meets the requirements of the EU-Directive: 89/336/EEC "Electromagnetic Compatibility"	
Technical type approval according to 72/245/EEC (2004/104/EC) "Electromagnetic Compatibility in motor vehicles"	

50-02-0242-3, 2006-11-20

Subject to alterations and errors expected