

# QUICK START GUIDE

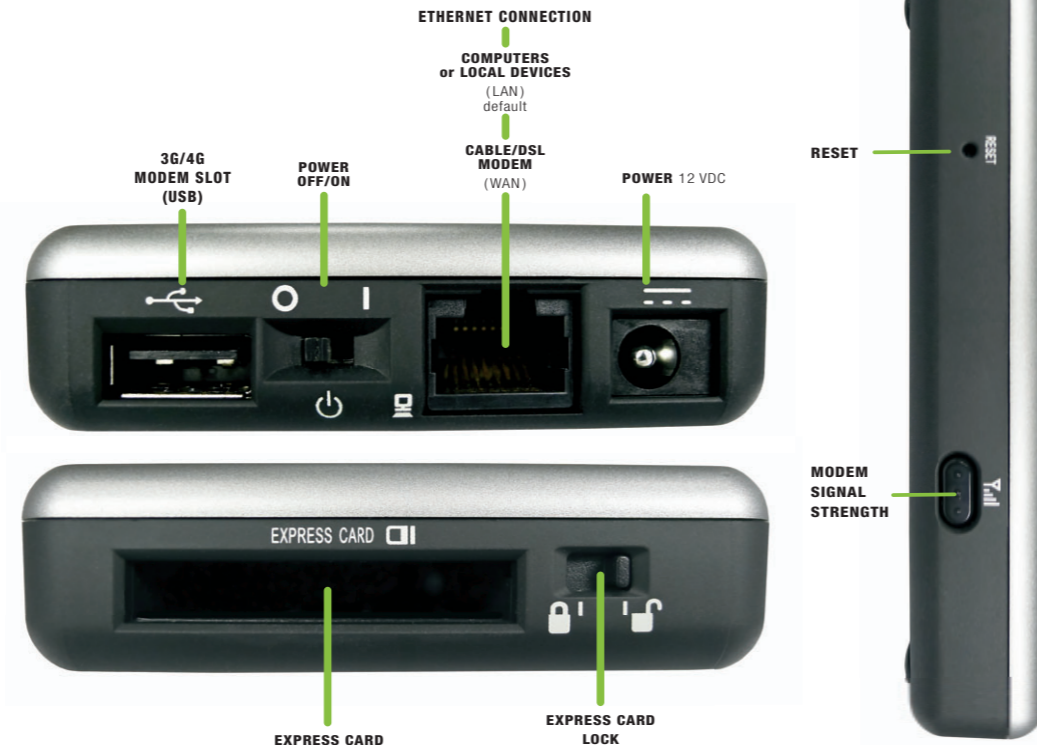
CBR400

## SETTING UP THE ROUTER

- 1) Plug the power supply into an electrical outlet.
- 2) Connect the power supply to the CBR400. Ensure power is switched on. **o** = OFF **I** = ON
- 3) Connect a: USB or ExpressCard Wireless Broadband Data Modem with Active Subscription, or a Cable, DSL, Satellite, T1, T3, Ethernet Modem.



## PORTS & SWITCHES



## CONNECTING YOUR COMPUTER

After you connect your modem to the router, you're now ready to connect to the CradlePoint CBR400 WiFi.

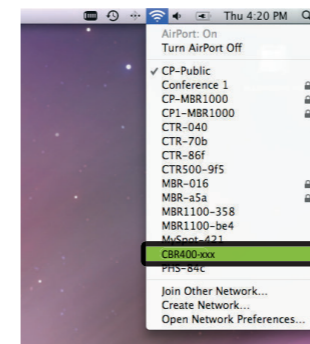
Internal 802.11n antennas provide up to 500 feet of range from the CradlePoint router to your connected computers or WiFi-enabled devices.

Find your operating system and follow the connection steps.

Find your default password on the bottom of your router (last 8 characters of your MAC Address).

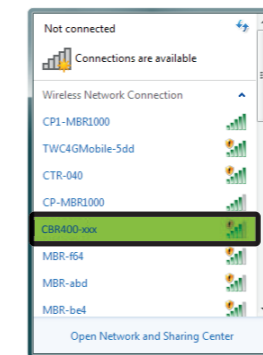
**NOTE:** If you are asked for an "8-digit PIN", click **CONNECT USING A SECURITY KEY** and enter your **eight character default password** found on the bottom of your router.

### MAC OS X



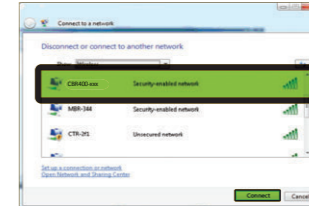
- 1) Open your wireless connection list by clicking the AIRPORT wireless icon on your menu bar. You'll see a list of available wireless networks
- 2) Click on the CBR400-xxx
- 3) Enter Default Password

### WINDOWS 7



- 1) Click the NETWORK CONNECTION icon in the lower right hand corner taskbar. You'll see a list of available wireless networks
- 2) Click CBR400-xxx
- 3) Click CONNECT
- 4) Enter Default Password
- 5) Click OK

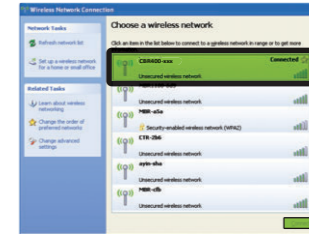
### WINDOWS VISTA



**NOTE:** If you are asked for an "8-digit PIN", see note on page 3.

- 1) Click START
- 2) Hover over CONNECT TO
- 3) Click WIRELESS NETWORK CONNECTION. You'll see a list of available wireless networks
- 4) Click CBR400-xxx
- 5) Enter Default Password
- 6) Click CONNECT

### WINDOWS XP



- 1) Click START
- 2) Hover over CONNECT TO
- 3) Click WIRELESS NETWORK CONNECTION. You'll see a list of available wireless networks
- 4) Click CBR400-xxx
- 5) Enter Default Password
- 6) Click CONNECT

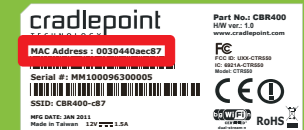
For additional information, visit: [www.cradlepoint.com/cbr400](http://www.cradlepoint.com/cbr400)

## FINDING YOUR PASSWORD

Your unique default password is shown on the product label on the bottom of your router. It's the last **eight characters of the MAC Address**.

You will be asked for this password when you connect a new device to the WiFi network or log into the administration pages.

The default password provides WiFi security out-of-the-box.



find this label on the bottom of your router

# USING THE FIRST TIME SETUP WIZARD

The First Time Setup Wizard will help you customize the name of your wireless network, change passwords to something you choose, and establish an optimal WiFi security mode. The CBR400 comes with a unique password creating built-in WiFi Security, which prevents unauthorized users from connecting to your WiFi network.

- 1) Open a browser window and type “**cp**” or “**192.168.0.1**” in the address bar. **PRESS ENTER/RETURN.**
  - 2) When prompted for your password, type the **eight character Default Password** found on product label (the last eight characters of the MAC Address).
  - 3) When you log-in for the first time, you will be automatically directed to the **FIRST TIME SETUP WIZARD.**
  - 4) STEP 1/4: If you choose, you can change the router's **ADMINISTRATOR PASSWORD.** Then, select your **TIME ZONE.** Click **NEXT.**
  - 5) STEP 2/4: CradlePoint recommends you customize your WiFi Network Name. Type in your personalized Wireless Network Name here. You can also enable the Guest Network feature (see description on page 7).
- Choose the **WIFI SECURITY MODE** that best fits your needs: **POOR** for **WEP**, **GOOD** for **WPA/WPA2** and **BEST** for **WPA2 Only.** ( *Make sure your PC or other devices support the mode you choose* ).
- Choose a personalized **WIRELESS SECURITY PASSWORD.** This password will be used to reconnect your devices to the router once the security settings have been saved. Click **NEXT.**
- 6) STEP 3/4: If necessary, select your 4G WiMAX Realm. Using a 3G or LTE modem no selection is necessary. Click **NEXT.**
  - 7) STEP 4/4: Review the details and record your wireless network name, administrative and wireless WPA password. Click **APPLY** to save the settings to your router.

If you are currently using the CBR400 WiFi network, reconnect your devices to the network using the new wireless network name and wireless security password.

# MODEM SUPPORT & UPDATES (FIRMWARE)

CradlePoint regularly makes new modem support and performance enhancements available for our products in a software package called “firmware”. Updating firmware ensures your CBR400 is ready for today and tomorrow’s technology.

## To Update Your Firmware, Follow The Steps Below:

- 1) Connect your computer to the CBR400 via its WiFi network broadcast or an Ethernet cable. (see pages 3 & 4)
- 2) Open a browser window and type “**192.168.0.1**” in the address bar. **PRESS ENTER/RETURN.**
- 3) Enter your password to login. **Your unique password is the administrator password you set earlier or the default password found on the bottom label (last 8 characters of the MAC Address).**
- 4) Select **SYSTEM SETTINGS** on the top navigation bar, then **SYSTEM SOFTWARE** in the drop down menu.
- 5) Find the **FIRMWARE UPGRADE** section. This will display the current firmware version that is installed and indicate if updated firmware is available.
- 6) Click **AUTOMATIC (Internet)** if new firmware is available. The router will download and install the firmware and automatically reboot itself. A status monitor will appear and indicate when this process is complete. This process may take several minutes depending on your internet connection speed.
- 7) If your router does not have an active internet connection (ie: modem not working on older firmware) you will need to download the latest firmware from [www.cradlepoint.com/cbr400](http://www.cradlepoint.com/cbr400) to your desktop, then use **MANUAL FIRMWARE UPLOAD** option.

# SPECIAL FEATURES of the CBR400

## GUEST WiFi NETWORK

Your router can broadcast two WiFi networks: one *private* and one *public*. Guests on the public network have full, secure access to the internet - but are restricted from accessing the router administration or connected devices on the private network.

Enable the Guest Network in Step 2 of the First Time Setup Wizard. It will appear as “Public-xxx” in your available networks list.

## WiFi as WAN

Public WiFi networks aren’t very secure, but are generally free. The CBR400 can receive a WiFi signal and use it to create internet access, securely connecting up to 16 devices via WiFi using the CBR400’s security features.

Enable this feature by logging in to your router (see steps 1 & 2 on page 5) and switching to “Advance Mode” by clicking on “Basic Mode” box in the upper left corner of the Administration Interface. Then select **INTERNET** on the top navigation bar and then **WiFi as WAN Settings** in the dropdown menu. Click **ENABLED** and then **REFRESH** under **Site Survey** (wait a moment while the device scans). Select the WiFi network you’d like to use as your Internet Connection and click **IMPORT.**

## RESET

To restore the router to its factory settings, press and hold the **RESET** button on the side of the router for ten seconds. Reset returns the login to **DEFAULT PASSWORD** found on the bottom of your router. This is useful if you have changed your WiFi security settings and can no longer access the internet.

## FEDERAL COMMUNICATION COMMISSION STATEMENT

This equipment has been tested and found to comply with the limits for a Class B digital device, pursuant to Part 15 of FCC Rules. These limits are designed to provide reasonable protection against such interference in a residential installation. This equipment generates, uses, and can radiate radio frequency energy and, if not installed and used in accordance with the instructions provided by CradlePoint, may cause harmful interference to radio communications. This device must accept any interference received, including interference that may cause undesired operations. However, there is no guarantee that interference will not occur in a particular installation. If this equipment does cause harmful interference to radio or television reception, which can be determined by turning the equipment off and on, the user is encouraged to try to correct the interference by using one or more of the following measures:

- Reorient or relocate the receiving antenna.
- Increase the separation between the equipment and receiver.
- Connect the equipment into an outlet on a circuit different from that to which the receiver is connected.
- Consult the dealer or an experienced radio or television technician for help.

Changes or modifications not expressly approved by CradlePoint, Inc. could void the user’s authority to operate the product.

## RADIO FREQUENCY INTERFERENCE REQUIREMENT - CANADA

This Class B digital apparatus complies with Canadian ICES-003. Cet appareil numérique de la classe B est conforme à la norme NMB-003 du Canada.

## WARRANTY INFORMATION

CradlePoint, Inc. warrants this product against defects in materials and workmanship to the original purchaser (or the first purchaser in the case of resale by an authorized distributor) for a period of one (1) year from the date of shipment. This warranty is limited to a repair or replacement of the product, at CradlePoint’s discretion. CradlePoint does not warrant that the operation of the device will meet your requirements or be error free. Within thirty (30) days of receipt should the product fail for any reason other than damage due to customer negligence, purchaser may return the product to the point of purchase for a full refund of the purchase price. If the purchaser wishes to upgrade or convert to another CradlePoint, Inc. product within the thirty (30) day period, purchaser may return the product and apply the full purchase price toward the purchase of another CradlePoint product. Any other return will be subject to CradlePoint, Inc.’s existing return policy.

## SAFETY AND HAZARDS

Due to the nature of wireless communications, data transmission and reception is not guaranteed and may be delayed, corrupted (i.e., contain errors), or lost. The device is not intended for and should not be used in any critical applications where failure to transmit or receive data properly could result in property damage, loss or personal injury of any kind (including death). CradlePoint expressly disclaims liability for damages of any kind resulting from: (a) delays, errors, or losses of any data transmitted or received using the device; or (b) any failure of the device to transmit or receive such data.

## LIMITATIONS OF LIABILITY

THE REMEDIES PROVIDED HEREIN ARE YOUR SOLE AND EXCLUSIVE REMEDIES. IN NO EVENT SHALL CRADLEPOINT INC. BE LIABLE FOR ANY LOST PROFITS, DIRECT, INDIRECT, SPECIAL, INCIDENTAL, PUNITIVE OR CONSEQUENTIAL DAMAGES, WHETHER BASED ON CONTRACT, TORT, OR ANY OTHER LEGAL THEORY.

## PRIVACY

CradlePoint may collect general data pertaining to the use of CradlePoint products via the Internet including, by way of example, IP address, device ID, operating system, browser type and version number, etc. To review CradlePoint’s privacy policy, please visit: <http://www.cradlepoint.com/privacy>.