

SAMSUNG

Quick Start Guide

Bluetooth Mono Headset WEP170

Get connected in 4 quick steps

- 1 Charge your headset
- 2 Put headset in pair mode
- 3 Pair phone with headset
- 4 Test and use

Start hear 

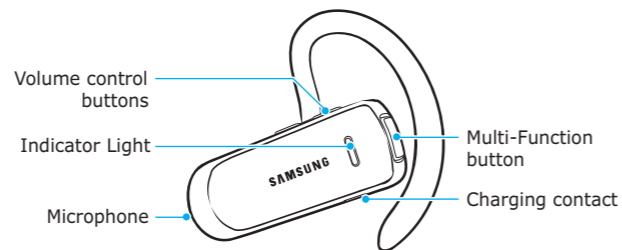
- **Headquarters:**
1301 East Lookout Drive Suite 150
Richardson, TX 75082
- **Internet Address:**
<http://www.samsungusa.com>
- **Guide Number:** GH68-



Before using your headset

Thank you for purchasing the Samsung Bluetooth Mono Headset WEP170, we hope you will be delighted with its operation.

Take a moment before you get started to familiarize yourself with your new headset.



Check phone compatibility

The Samsung Bluetooth headset WEP170 is compatible with most Bluetooth¹ (see **Glossary**) phones that are compliant with Bluetooth version 1.1 or higher specification and support the headset and/or hands-free profile(s)². Ensure that your phone has Bluetooth capability by visiting your phone manufacturer's web site.

Check the accessories

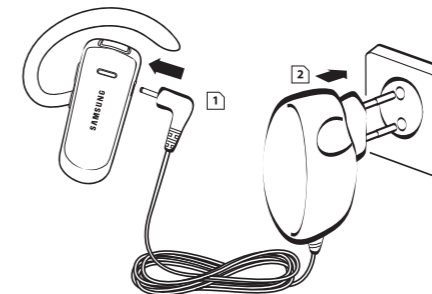
Make sure you have the following items with your headset:

Bluetooth headset, Adapter, Manual

- ☑ **NOTE:**
Your headset supports the headset and/or hands-free profile(s).

Charge your headset

Samsung Bluetooth headset WEP170 uses a rechargeable battery that must be charged fully before you use the headset for the first time.



- 1 Plug the AC charging adaptor into the headset's charging socket.
- 2 Plug the AC adaptor into the electrical outlet.
- 3 Charge your headset until the red light turns to blue light on headset.
- 4 The unit will be fully charged in approximately 2 hours.
- 5 Remove AC charging adaptor from the headset. You are now ready to "pair" headset to your mobile phone. If the headset has already been paired to your phone, then you can begin using it.

- ☑ **NOTE:**
The headset cannot be used while charging.

Put your headset in pairing mode

Before you can use your headset, you must pair it with your phone.

- 1 Ensure that the headset is off (see Turn headset on/off on the reverse side of this guide).
- 2 Press and hold the Multi-Function button until the indicator light turns on in blue (approximately 8 seconds).



The indicator light flashes in blue as you press and hold the Multi-Function button. Continue holding down the button until the blue light is steadily lit.

Turn on Bluetooth on your phone and pair with headset

Set your Bluetooth phone to discover the headset by following your phone's guide.

Typically, the steps involve going to a 'Setup', 'Connect', or 'Bluetooth' menu on your phone and then selecting the option to discover Bluetooth devices.

Your phone will find the Samsung WEP170 headset and ask if you want to pair with it. Confirm this by pressing the Yes or OK key.

If pairing was successful, the indicator light will flash in blue 10 times rapidly before going to flashing every 3 seconds. If unsuccessful, the light remains on, and you will need to re-attempt pairing.

Test and use

Your phone and headset are now paired and ready to make and receive calls. To confirm they are operating properly, make a call:

- 1 Place the headset over your ear. See "Wearing the headset" on the reverse side of this guide.
- 2 On your phone, make a call to the number you want.
- 3 If your phone and headset are successfully paired, you will hear ringing on the headset.

After you have successfully paired your phone and headset, you do not need to repeat these initial setup steps each time you use the headset.

Using your WEP170

See **Features and Functions Guide** on the reverse side of this guide for information on using your WEP170.

Features and Functions Guide

SAMSUNG Bluetooth Mono Headset WEP170

Important:

Be sure to first follow the Quick Start Guide on the reverse side of this guide to complete initial setup of your headset.

■ **Headquarters:**
1301 East Lookout Drive Suite 150
Richardson, TX 75082

■ **Internet Address:**
<http://www.samsungusa.com>



Turn headset on/off

To turn the headset on,
Press and hold the Multi-Function button for 1 to 2 seconds until you see a burst of 3 flashes on the blue indicator light, then release. You will hear a tone and see the indicator light flashes while the power is on (see Meaning of the indicator light of this guide).

To turn the headset off,
Press and hold the Multi-Function button for 3 to 5 seconds until you see a burst of 3 flashes on the blue indicator light, then release. You will hear series of 2 tones and see the indicator light stops flashing.

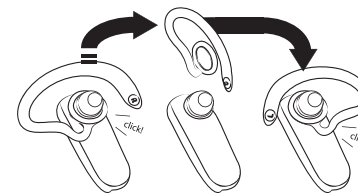
Wear the headset

For optimal performance, wear Samsung WEP170 and your Bluetooth phone on the same side of your body. In general, you will get better performance when there are no obstructions (including parts of your body) between the headset and the phone.



Change for use on other ear

Samsung Bluetooth headset WEP170 is ready to wear on the right ear. If you prefer the left, gently rotate the ear hook.



Adjust the volume

Press [▲] on the side of the headset to increase the volume level and press [▼] to decrease the volume level.

Troubleshooting

My phone does not find my headset.
Make sure the blue indicator light on your headset turns on when your phone is searching for devices.

My headset worked before but now it is not working.
Make sure your phone is on and the Bluetooth feature is turned on in your phone. If the Bluetooth feature has been turned off or was turned on only temporarily, you may need to restart the Bluetooth feature. If you have confirmed the Bluetooth feature is on in your phone, pair your phone and headset again.

Make calls

Using phone's keypad

- 1 Dial number on keypad.
- 2 Press phone's "send" key.

Using voice-activated dialing (after you've set up voice tags on your phone)

- 1 Long Press and release Multi-Function Button once.
- 2 You'll then hear the voice-activation tone; say the name of the person you wish to call.

NOTE:
Record voice tag from headset for better reception.

End a call

- Press and release Multi-Function Button once.
- OR**
- End call from phone's keypad.

Answer a call

- After you hear the ring tone, press and release Multi-Function Button once.
- OR**
- Answer the call with your phone's keypad. You may then need to transfer the call to the headset by pressing and releasing Multi-Function Button once. (depending on your phone)

Call-waiting

- (Recommended) Use standard method from your phone's keypad which typically involves pressing the "send" button.
- OR**
- Long press and release Multi-Function Button once to answer the incoming call and toggle between calls. (some phones do not support this headset feature)

NOTE:
Do not hold the Multi-Function Button button down too long when making, ending, or answering a call. This should only be a quick tap, so you don't put the headset into pairing mode by accident.

Use enhanced features

Enhanced features are available for phones that support the hands-free Bluetooth profile. Check your phone's instruction guide or contact the phone manufacturer if you are not sure if your phone supports the hands-free Bluetooth profile.

Once you're done pairing, the following headset features will be available:

- **Last number redial** (when not on a call)
While the headset is on, press and hold Multi-Function Button release.
- **Rejecting an incoming call** (when not on a call)
When your phone rings, press and hold Multi-Function Button release.
- **Call-waiting** (swapping between 2 calls)
When your phone notifies you of another incoming call while you're on a call, press and hold Multi-Function Button release.
- **Putting a call on hold**
While you're on a call, press and hold Multi-Function Button release immediately. Repeat to retrieve the call.

Meaning of the indicator light

Light	Tone	Status
Flashes in blue every 8 seconds.	Quick series of 2 tones. (Active mode starts.)	The headset is in Active mode. <ul style="list-style-type: none">• The headset has an active call in progress.• You can talk up to 8 hours.
Flashes in blue every 3 seconds.	Quick series of 2 tones. (Standby mode starts.)	The headset is in Standby mode. <ul style="list-style-type: none">• The headset is waiting for a call.• The headset can be in Standby mode up to 200 hours.*
Flashes in red instead of blue.	5 tones every 20 seconds.	The battery of the headset is low. Recharge the battery. <ul style="list-style-type: none">• 3 to 5 minute of talk time left.

*Depending on the phone type and usage, the actual time may vary.